

Panelicity®
Series 36

1 CONTROLLER



Moore 352/353
MOD 30ml
Bailey CLC/SLC
53MC5000, 53SC6000

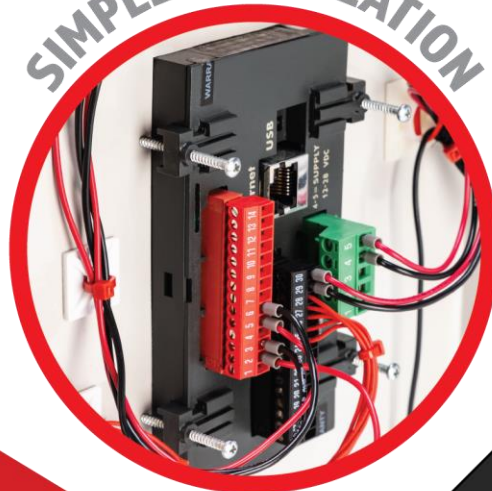
MIGRATE



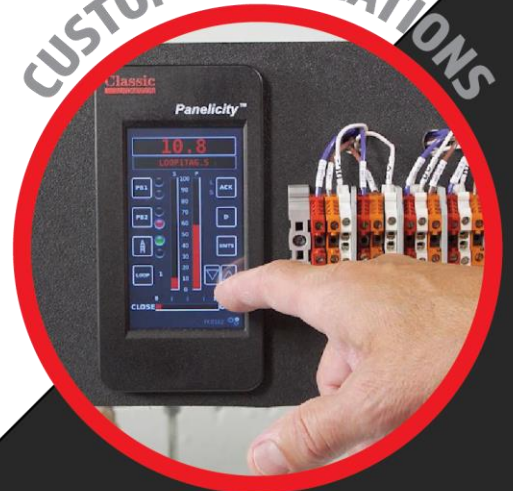
SLIM DESIGN



SIMPLE INSTALLATION



CUSTOM APPLICATIONS



Panelicity[®] Series 36

Process Automation Control Made Simple

Panel Controller 1/2 DIN (3x6)

Migrate Your Controller

Finally, a simple solution for replacing your obsolete control technology. Avoid downtime by being proactive. **Panelicity[®] Series 36** has the same functionality and familiar displays as your existing controller. It is preconfigured with standard control strategies. Easily replace your obsolete 1/2 DIN (3x6) controller with modern technology featuring intuitive menu-driven templates.

Reasons to Choose Panelicity

- Easy Installation and Configuration Migration
- Familiar Operational Displays
- Smaller Footprint
- Modern Technology
- Lower Total Cost

Cost Effective

Panelicity[®] saves you money. Simple menus allow all entries from the display. Your existing applications are easily migrated and familiar, so operator retraining is not required. The look and feel remain the same.

Modern Technology

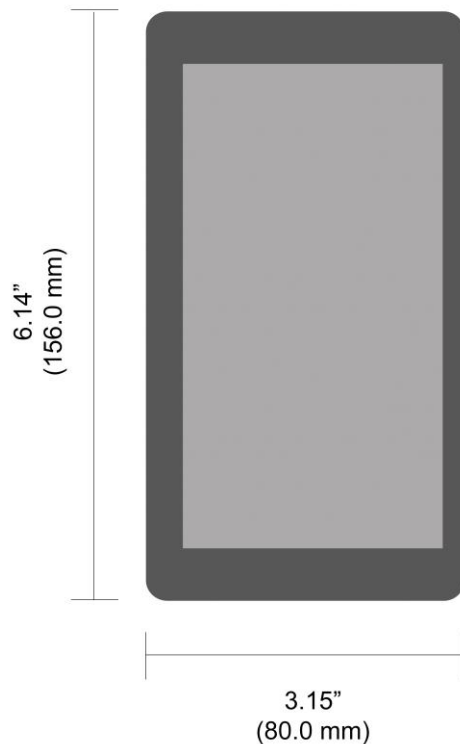
- Full-color touch screen with integrated PLC
- Field proven hardware with an installed base of 6,000+ worldwide
- Advanced features such as trending and alarm data logging
- Secure backups on a USB flash drive
- Implement up to four (4) control loops with a single controller

Easy Installation

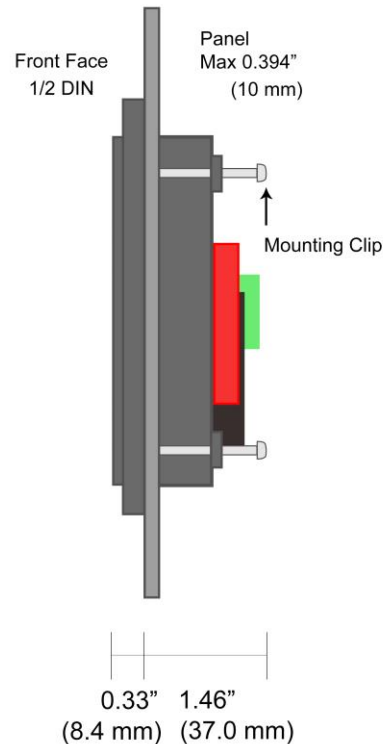
The **Panelicity**[®] 1/2 DIN (3x6) controller extends less than 2 inches into the panel for use in areas with depth restrictions. Panel depth is 2.25 inches when an ethernet cable is attached.

Controller Installed In Panel

Front View



Side View



A simple cutout in your panel is all that is required to install **Panelicity**[®].

The controller draws low power, consuming under 500mA. The unit is slim and mounts easily. A 24V power supply is required and is available as an option when ordering.

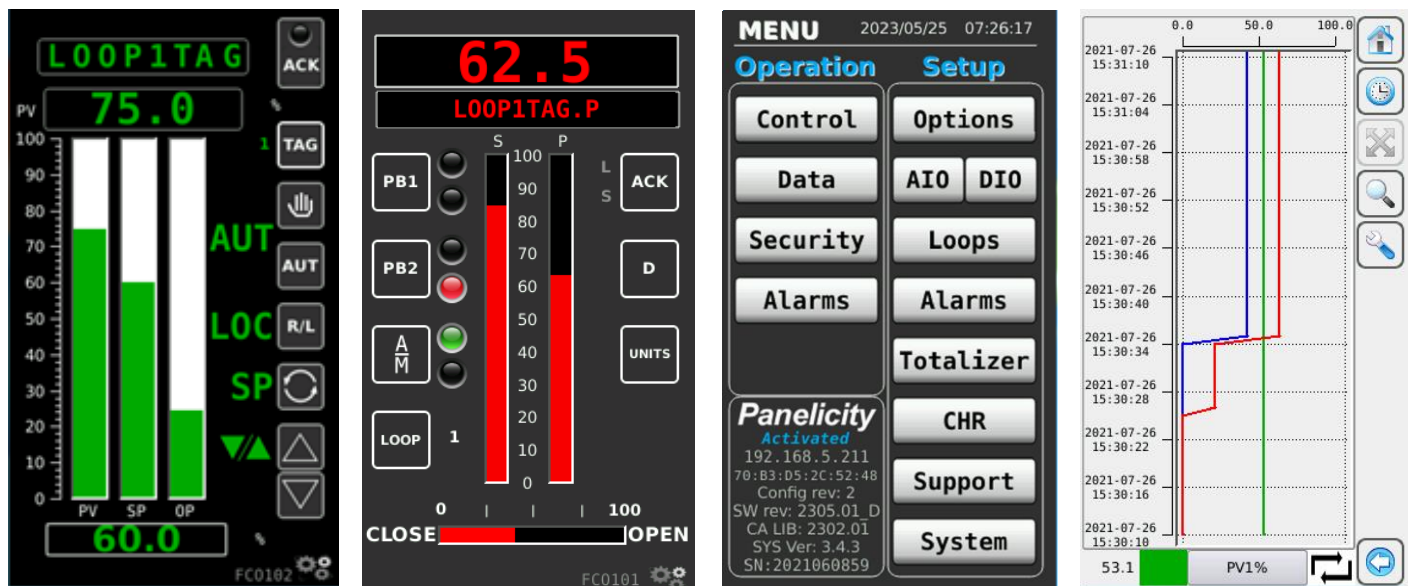
Application Database Conversion

Classic Automation provides a free evaluation of your applications for conversion. Most applications will not require this step. Just send us a copy of your program when possible, and pictures of your wiring.

Typical applications for *Panelicity*[®] include:

- Industrial temperature, pressure, flow, level control
- Boiler combustion control
- Boiler level and feed water flow control
- Chemical liquid blending for paint, inks, dyes, etc.
- Pressure control for critical control loops
- Many others

Operator Interface



The *Panelicity*[®] displays feature intuitive icons for navigating menus compared to traditional 3x6 controllers. Typical setup parameters such as I/O types, ranges, and PID parameters are logically organized with no need to learn special software. Control templates have a data entry table to document your settings for back-up. Security access authority is provided to eliminate unauthorized field changes.

Customized Applications

Work with us to customize and install your Panelicity controller. Classic Automation provides engineering services to assist you with development or a complete turn-key solution. We offer Toolkit software which includes a function library based on the Moore 352/353 libraries.

Ordering Structure

TPAC100704A **A** 4T624Vu1CA

Model (**A** or **B**)

Model A I / O	Configurations Inputs / Outputs
2	Analog Inputs 0-10V, 2-10V, 1-5V, 0-20 mA, 4-20 mA, PT100, J, K, T, S, B,R
2	Analog Outputs 0-10V, 2-10V, 1-5V, 0-20 mA, 4-20 mA
5	Digital Outputs

Model B I / O	Configurations Inputs / Outputs
2	Analog Inputs 0-10V, 2-10V, 1-5V, 0-20 mA, 4-20 mA, PT100, J, K, T, S, B, R
2	Analog Outputs 0-10V, 2-10V, 1-5V, 0-20 mA, 4-20 mA, PWM
2	Analog Outputs 0-10V, 2-10V, 1-5V, PWM
1	Digital Input
8	Programmable Digital Inputs / Outputs
3	Analog Inputs 0-10V, 2-10V, 1-5V

Model A

TPAC100704AA**4T624Vu1CA**

Preprogrammed for Standard FCOs

Number of I/O	Configurations Inputs / Outputs
2	Analog Inputs 0-10V, 2-10V, 1-5V, 0-20 mA, 4-20 mA, PT100, J, K, T, S, B, R
2	Analog Outputs 0-10V, 2-10V, 1-5V, 0-20 mA, 4-20 mA
5	Digital Outputs

Part Number:**TPAC100704A**A**4T624Vu1CA**

Controller w/ Integrated I/O
Touch-Screen 4.3", Vertical
2 AI 0-10V, 2-10V, 1-5V, 0-20mA, 4-20mA, PT100, TC
2 AO 0-10V, 2-10V, 1-5V, 0-20mA, 4-20mA,
4 DO PNP

Model B

TPAC100704A B 4T624Vu1CA

Use for Applications that require additional I/O functionality not available in existing standard control template strategies.

Number of I/O	Configurations Inputs / Outputs
2	Analog Inputs 0-10V, 2-10V, 1-5V, 0-20 mA, 4-20 mA, PT100, J, K, T, S, B, R
2	Analog Outputs 0-10V, 2-10V, 1-5V, 0-20 mA, 4-20 mA, PWM
2	Analog Outputs 0-10V, 2-10V, 1-5V, PWM
1	Digital Input, PNP or NPN
8	Programmable Digital Inputs/Outputs, PNP
3	Analog Inputs, 0-10V, 2-10V, 1-5V

Part Number:**TPAC100704AB4T624Vu1CA**

Controller w/ Integrated I/O

Touch-Screen 4.3", Vertical

2 AI 0-10V, 2-10V, 1-5V, 0-20mA, 4-20mA, PT100, TC

2 AO 0-10V, 2-10V, 1-5V, 0-20mA, 4-20mA, PWM

2 AO 0-10V, 2-10V, 1-5V, PWM

1 Digital Input PNP or NPN

8 Programmable DI/DO PNP

3 AI 0-10V, 2-10V, 1-5V

Accessories

Part Numbers:

CA-ACIN01

5 Double-Throw Relay Output Module

CA-CAB-11604

Female A to Micro A – 4” Cable

CA-TSVL 5-24-100

24 VDC Power Supply, 5 AMP

CA-TSVL 2-24-100

24 VDC Power Supply, 2 AMP

CA-BACKUP-DRIVE

USB Flash Drive with CA Software, 8 GB

Controller Technical Specifications

Power Supply Voltage	12-28 VDC
Power Consumption	<500 mA
Operating Temperature	32°F (0°C) to 131F (55°C)
Storage Temperature	-4°F (-20°C) to 185°F (85°C)
Relative Humidity	5% to 95% non-condensing
Front Face Rating	IP65 (water resistant)
Housing	ABS, Polycarbonate
Touchscreen	Resistive, 4 wires
Micro-USB	Host 2.0
MODBUS TCP	Master/Client <i>Standard configuration allows Slave functionality</i>
Panel Cutout	Width 2.65" (68mm) x Height 5" (127mm)
Controller Dimensions (Including Bezel)	Width 3.15" (80mm) x Height 6.14" (156mm) x Depth 1.46" (37mm) <i>*Depth is the depth behind the panel. An additional 0.25" is needed for use with Ethernet cable.</i>
Ethernet	10M / 100Mbit/s - auto recognition Supports patch or crossover cable
Approvals	CE, UL (IP65, 60730)

Analog Inputs, Universal (2)	
Type	Current
Input Range	0 to 20 mA
Resolution	0.005 mA
Impedance	8 ohm
Type	Current
Input Range	4 to 20 mA
Resolution	0.005 mA
Impedance	8 ohm
Type	Voltage
Input Range	0 to 10 VDC
Resolution	0.003 V
Impedance	500 kΩ
Type	Voltage
Input Range	2 to 10 VDC
Resolution	0.003 V
Impedance	500 kΩ
Type	Voltage
Input Range	1 to 5 VDC
Resolution	0.003 V
Impedance	500 kΩ
Type	T/C Type J
Input Range	32° F (0° C) to 1,112° F (600° C)
Resolution	1.8°F (1°C)
Cold Junction Compensation	Yes
Type	T/C Type K
Input Range	32° F (0° C) to 2,192° F (1,200° C)
Resolution	1.8°F (1°C)
Cold Junction Compensation	Yes
Type	T/C Type T
Input Range	32° F (0° C) to 752° F (400° C)
Resolution	1.8°F (1°C)
Cold Junction Compensation	Yes

Type	T/C Type S
Input Range	32° F (0° C) to 2,912° F (1,600° C)
Resolution	1.8°F (1°C)
Cold Junction Compensation	Yes
Type	T/C Type B
Input Range	1,112° F (600° C) to 3,272° F (1,800° C)
Resolution	1.8°F (1°C)
Cold Junction Compensation	Yes
Type	T/C Type R
Input Range	32° F (0° C) to 2,732° F (1,500° C)
Resolution	1.8°F (1°C)
Cold Junction Compensation	Yes
Type	RTD, PT100E
Input Range	-40° F (-40° C) to 1,472° F (800° C)
Resolution	1.8°F (1°C)
Type	RTD, PT100R
Input Range	-40° F (-40° C) to 392° F (200° C)
Resolution	0.18°F (0.1°C)

Analog Outputs, Universal (2)	
Type	Current
Input Range	0 to 20 mA
Resolution	0.01 mA
Max Load Impedance	400 ohm
Type	Current
Input Range	4 to 20 mA
Resolution	0.01 mA
Max Load Impedance	400 ohm
Type	Voltage
Input Range	0 to 10 VDC
Resolution	0.01 V
Min Load Impedance	1kΩ
Type	Voltage
Input Range	2 to 10 VDC
Resolution	0.003 V
Impedance	500 kΩ

Type	Voltage
Input Range	1 to 5 VDC
Resolution	0.01 V
Min Load Impedance	1k Ω

Digital Outputs, (4)	
Type	PNP
Max Current Load	200 mA

Our calibration configuration allows you to specify a smaller operating range for calibration for certain input types to achieve increased accuracy for the input.

Industrial Control Strategy Templates

FCO101	Single Loop Control w/ Tracking Setpoint
FCO102	Single Loop Control w/ Fixed Setpoint
FCO103	External Set Control w/ Tracking Local Setpoint
FCO104	External Set Control w/ Non-Tracking Local Setpoint
FCO105	Ratio Set Control w/ Operator Setpoint Limits
FCO106	Single Loop Control w/ Operator Setpoint Limits
FCO107	Dual Loop Control
FCO121	Cascade Control
FCO122	Cascade Control w/ Operator Setpoint Limits

Experience the Simplicity

Classic Automation LLC
 800 Salt Road
 Webster, NY 14580

+1 (585) 241-6010
 Sales@classicautomation.com